

The Cold Frame



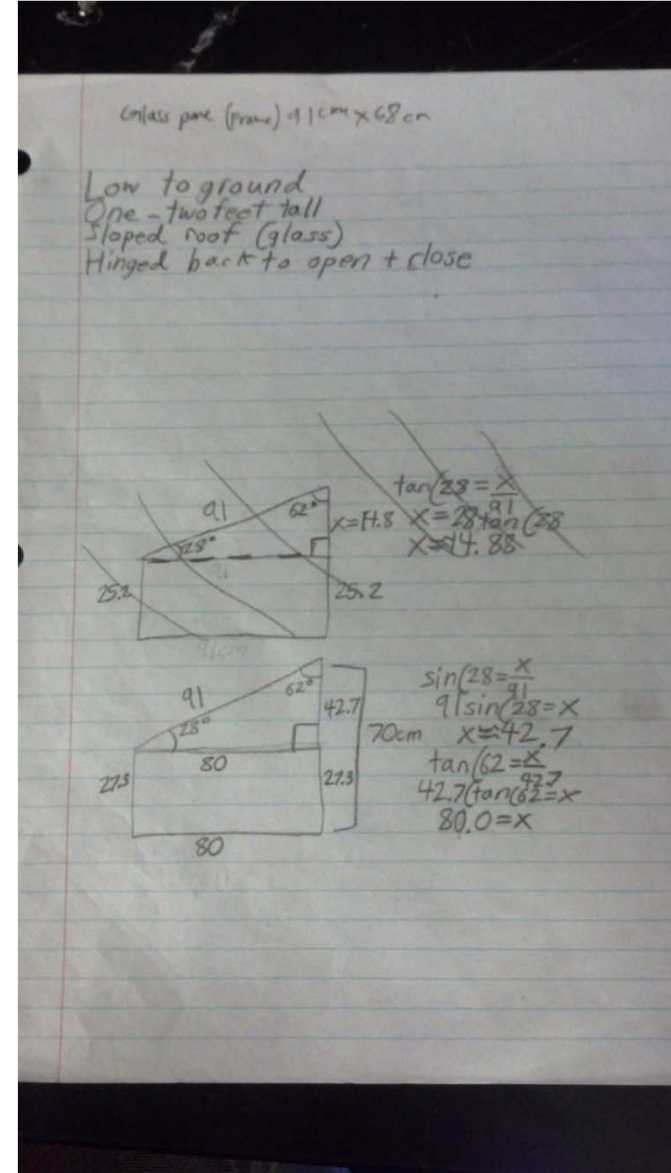
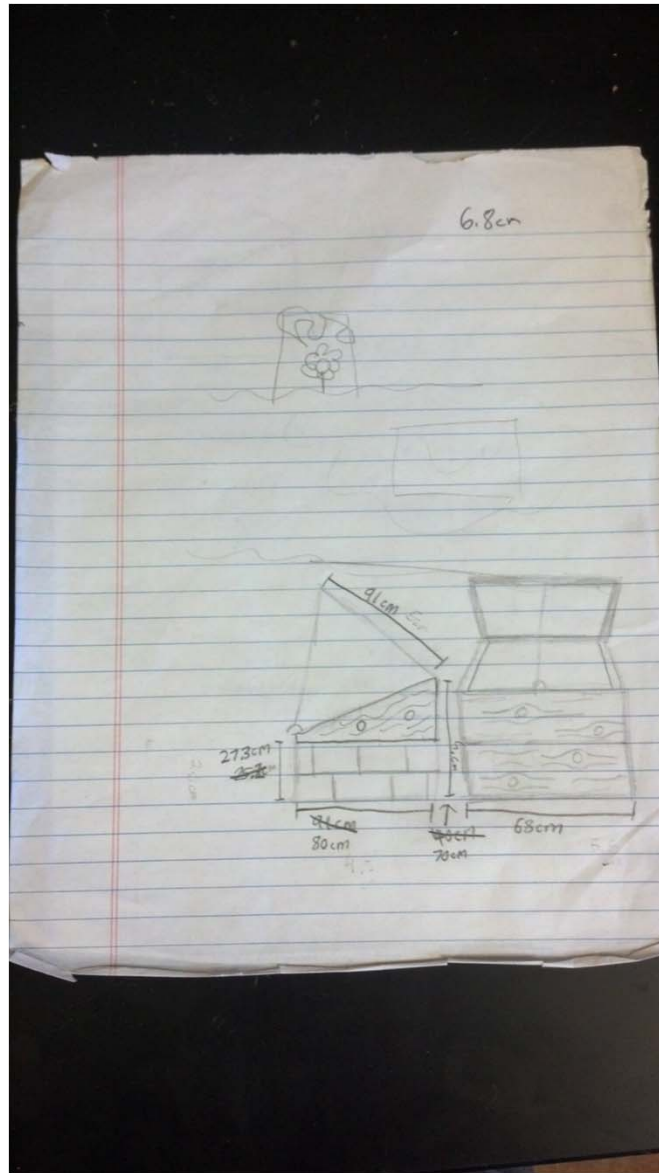
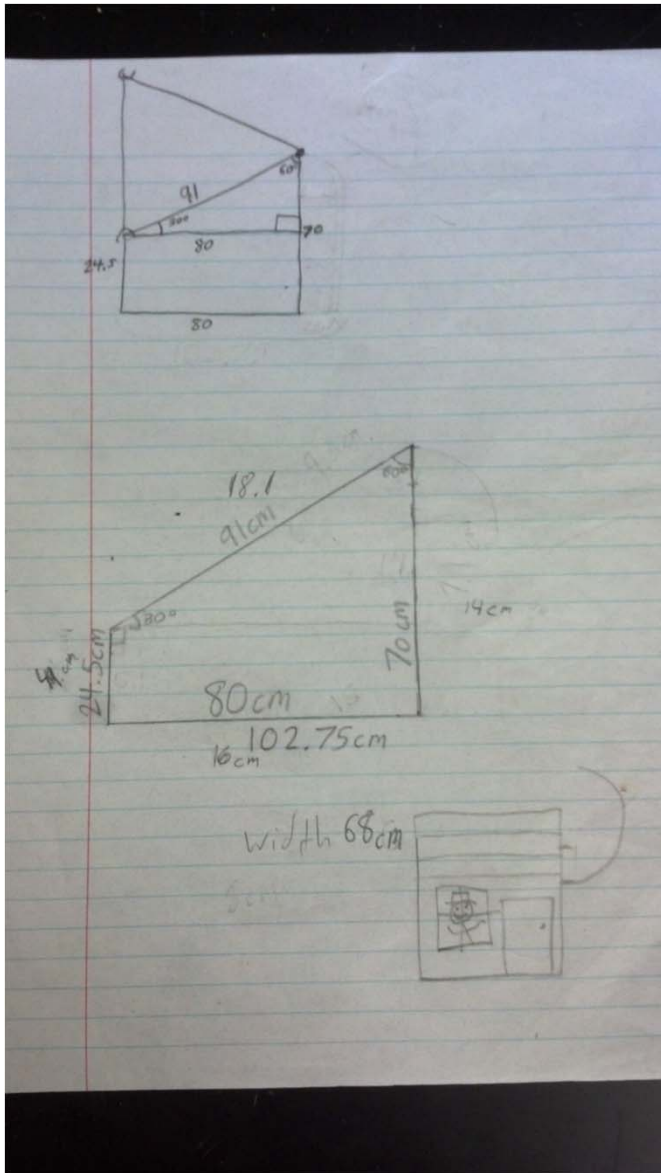
What is a Cold Frame?

- A shelter for plants during the winter
- Keeps frost out and heat in during the night
- Essentially a miniature greenhouse

Materials + Costs

- 28 5.7cmx9.2cmx19.4cm Bricks (**\$0.50 each**) <http://www.homedepot.com/s/bricks?NCNI-5>
 - 8 5.7cmx9.2cmx9.7cm Bricks (**\$0.25 each**) www.homedepot.com/p/030734006/204297577
 - 1 Tube of Alcolin Waterproof Glue (**\$5**) <http://www.alcolin.com/diy-products//waterproof-glue>
 - 3 ½inx5ftx8ft Softwood Plywood (**\$10 each**) <http://www.roseburg.com/softwood-plywood/>
 - 1 Glass Panel (**N/A**)
 - 2 2x4 (**\$2.50 each**) <http://www.homedepot.com/s/2x4?NCNI-5>
 - 14 2in Weatherproof Screws (**\$0.42**) www.jamestowndistributors.com/product.do?part=7063
- (\$56.42 total)**

Designs



Key Features

- Most cost-efficient Cold Frame
- Partial brick base to increase stability and absorb and retain heat more efficiently
- Hinged hatch to allow easy access
- Angled top to maximize light intake
- Can easily be duplicated